



# GAT MONTHLY MEMBERSHIP PROGRESS REPORT

Results as of: 11/30/2022

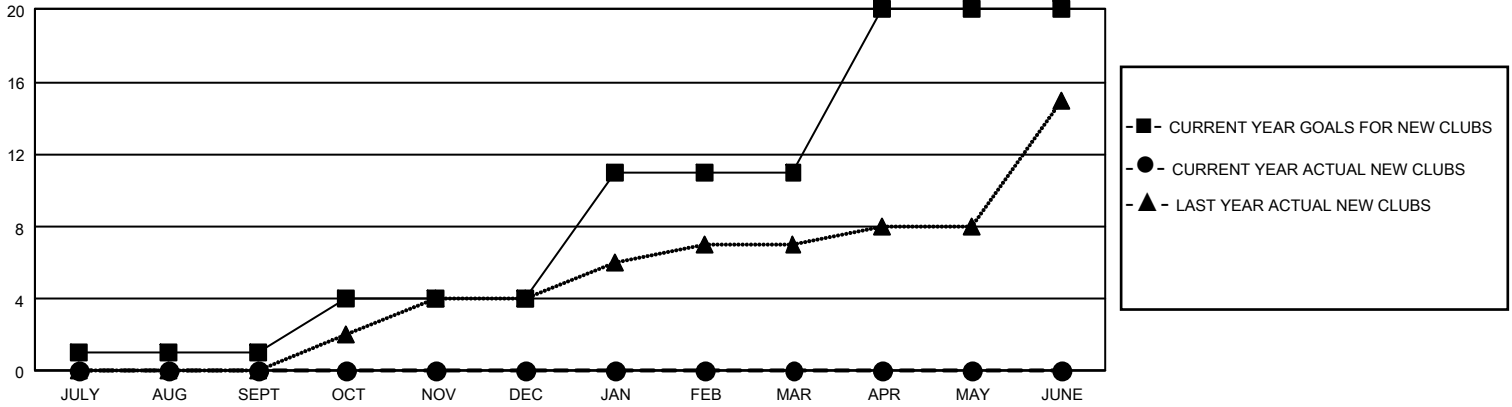
## GMT Constitutional Area 3, Group H

REPORT DOES NOT INCLUDE CLUBS IN UNDISTRICTED AREAS.

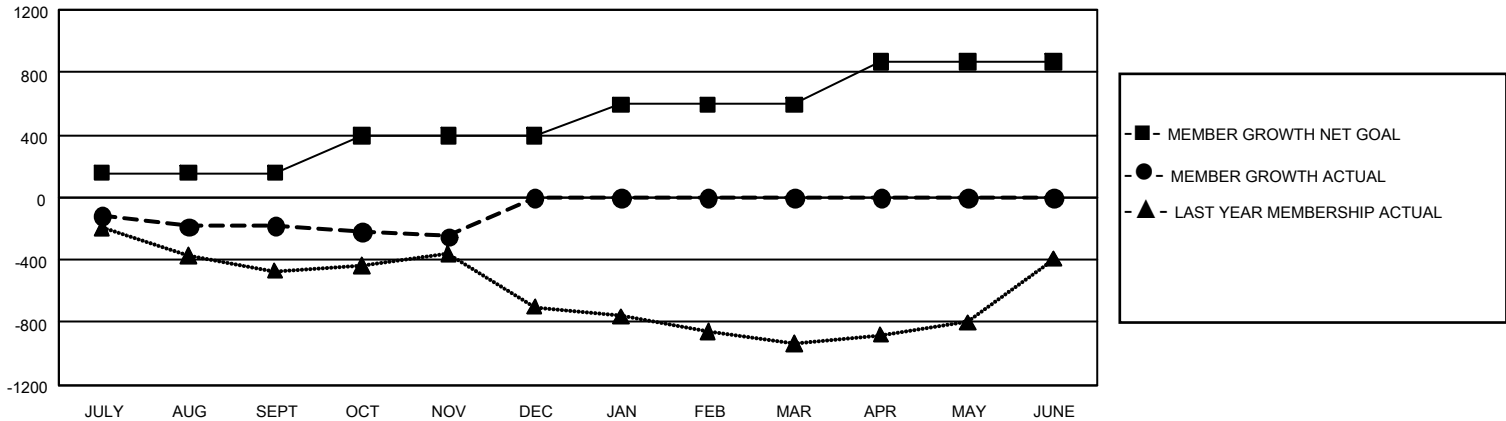
Clubs			
RESULTS FOR 2022-2023			
QUARTER	NEW CLUB GOAL	NEW CLUBS	DROPPED CLUBS
JULY/AUG/SEPT	3	0	2
OCT/NOV/DEC	9	0	0
JAN/FEB/MAR	21	0	0
APR/MAY/JUNE	27	0	0

Members			
RESULTS FOR 2022-2023			
QUARTER	MEMBER GROWTH NET GOAL	MEMBER GROWTH ACTUAL	DROPPED MEMBERS ACTUAL (including transfers)
JULY/AUG/SEPT	155	275	435
OCT/NOV/DEC	240	241	291
JAN/FEB/MAR	200	0	0
APR/MAY/JUNE	275	0	0

GOALS AND ACTUAL NEW CLUBS CUMULATIVE



GOALS AND ACTUAL MEMBERS CUMULATIVE



<b>DROPPED CLUBS: 2</b>	162 CLUBS OF 491 ADDED 1 OR MORE NEW MEMBERS	<b><u>GENDER DISTRIBUTION</u></b>	
		MALE 7,243 (49.76%) FEMALE 7,310 (50.22%) NON BINARY 0 (0.00%) PREFER NOT TO ANSWER 4 (0.03%)	
<b><u>DROPPED MEMBERS</u></b>		<a href="#">CLICK HERE FOR CUMULATIVE MEMBERSHIP DATA</a>	TOTAL FAMILY UNIT MEMBERS 7,634
DECEASED 53 CLUB CANCELLED 0 OTHER 673 <b>TOTAL 726</b>	FAMILY MEMBERS PAYING HALF DUES 3,901		